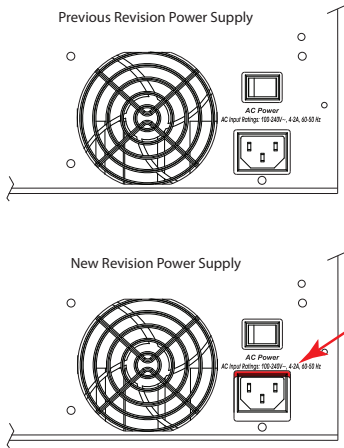


Full Boar⁴

Road Hog⁴



NOTICE:

The ATX power supply that has been used on the Full Boar 4 and Road Hog 4 consoles for many years has gone out of production. The replacement version has a different layout and location for the IEC power input, which no longer aligns to the opening on the console chassis. If the power supply requires replacement, and the console cannot be sent back to the factory to have the chassis replaced, the modification steps detailed here can make it possible to install a new revision power supply.

Important:



The serial number range of Full Boar 4 consoles that would require modification can be identified by the serial number before 72050804, or beginning with "55".

The serial number range of Road Hog4 consoles that would require modification can be identified by the last four digits of the serial number before 720062232 or beginning with "55".

Kit PN- 80430180

This chassis modification kit includes;

- Power Supply - 400W ATX
- File
- Power Adapter Male SATA
- Power Adapter PCIE

This chassis modification involves;

- Disconnection and removing the old power supply
- Masking and protecting internal electronic components from metal shavings
- Marking, masking, and filing away a portion of the aluminum chassis
- Cleaning and vaccuming out any shavings or remaining debris
- Installing and connecting the replacement power supply





These steps will be similar for both the Full Boar 4 console, and the Road Hog 4 console.



CAUTION:  Wear proper eye protection

STEP 1

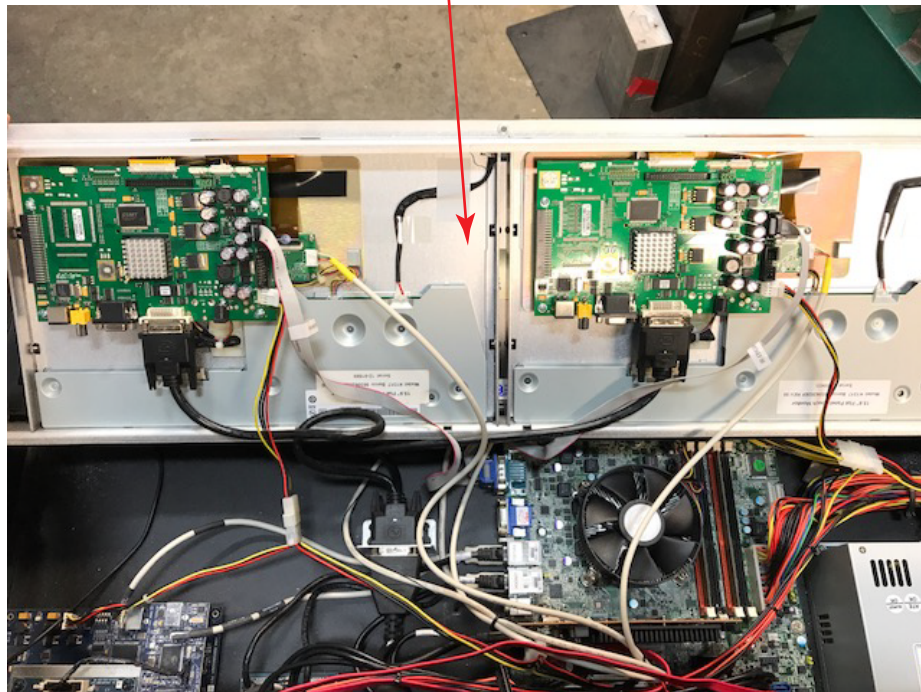
Disconnect power from the console and remove the front display cover.



Remove lower control panel mounting screws.

STEP 2

Disconnect and remove the display frame assembly. Set aside.

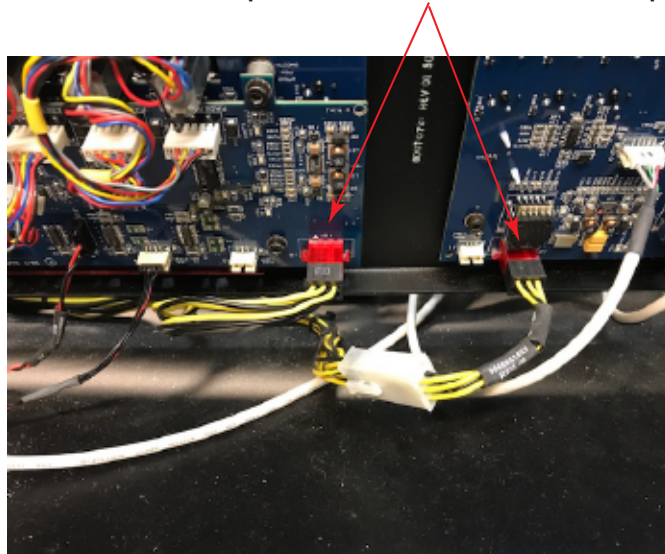


STEP 3

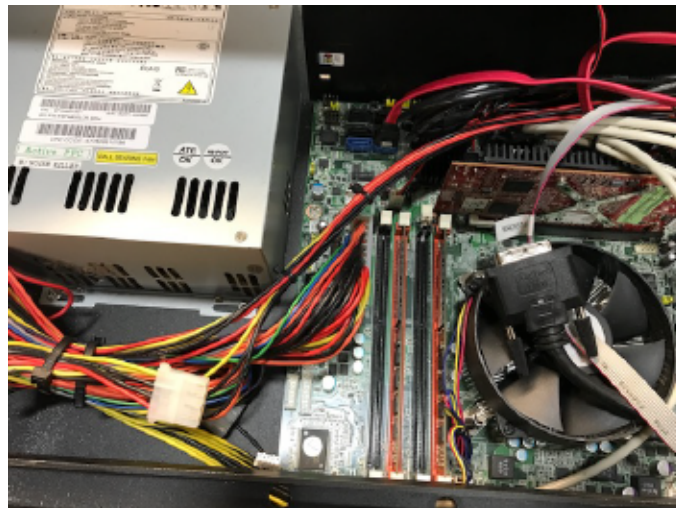
Cut and remove all zip ties from all power supply cable harness connections.

**STEP 4**

Lift open lower control panel and disconnect the power input connections.

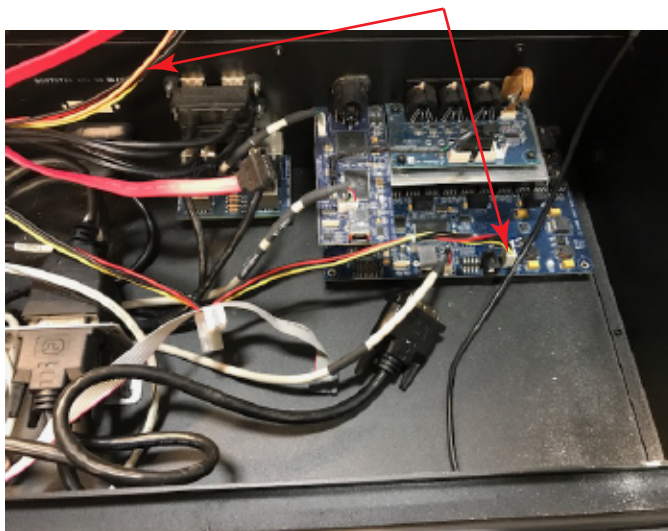
**STEP 5**

Disconnect all power supply connections to motherboard



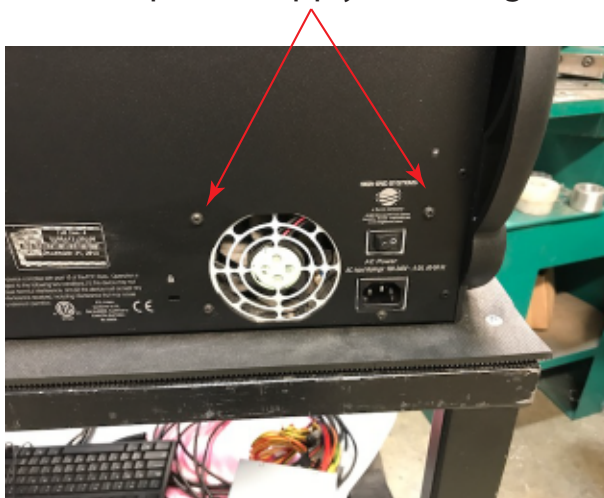
STEP 6

Disconnect power supply from DMX output board and SSD drive



STEP 7

Remove external power supply mounting screws and set aside.



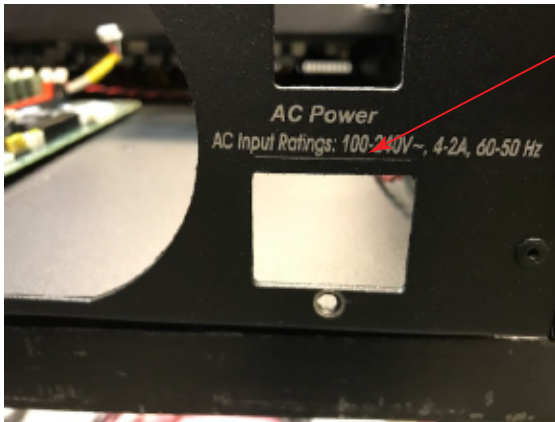
STEP 8

Remove internal mounting screws from the floor of the chassis.

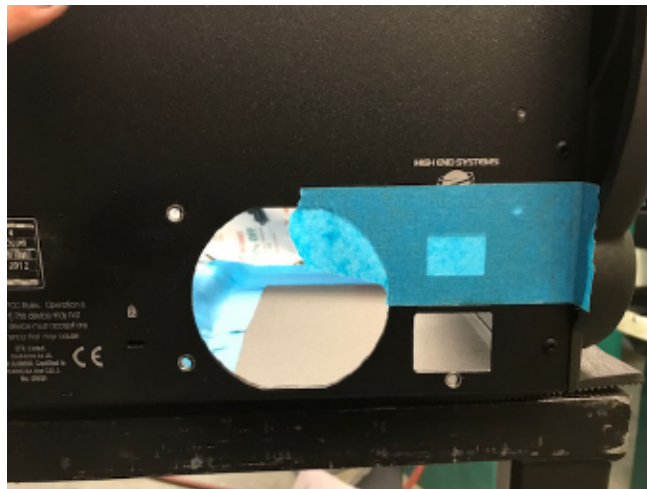


STEP 9

With power supply removed, make a horizontal mark 1/8 inch above the lower switch opening, just below the printed input ratings.

**STEP 10**

Add a piece of tape to make the line easier to see.

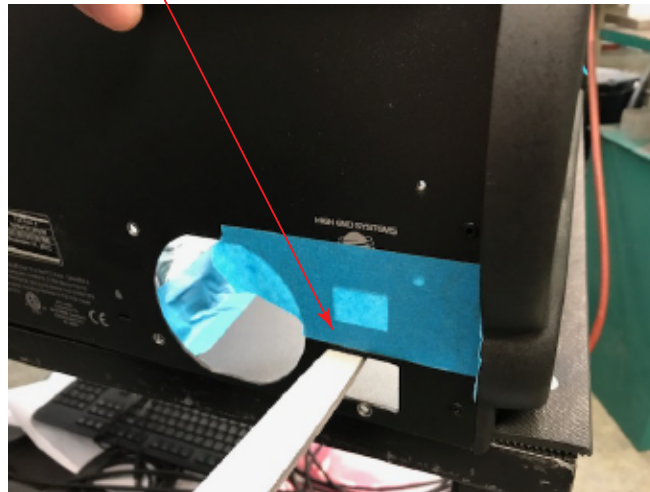
**STEP 11**

Mask off internal components to protect from filings.



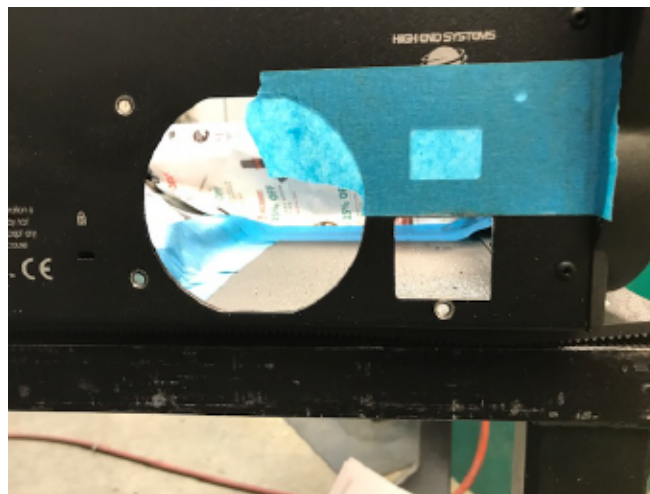
STEP 12

Using supplied file, begin removing material to open the height of the switch opening.



STEP 13

Remove material to the line of the tape.



STEP 14

Vacuum shavings out of the inside of chassis and remove masking.



STEP 15

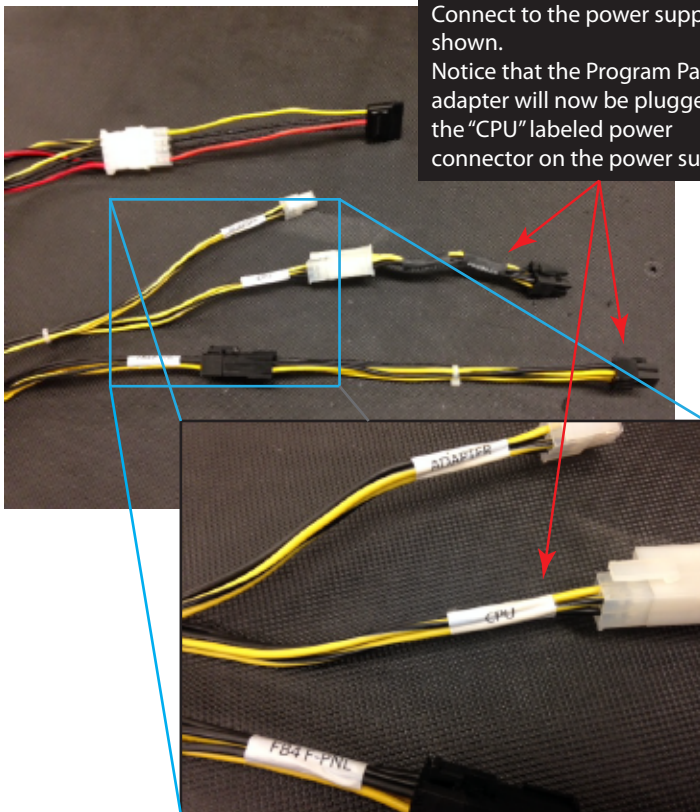
Install new replacement power supply using the saved screws. Remember to reinstall the internal mounting screws as well.



STEP 16

Reconnect the components to the new power supply with the supplied adapters.

Full Boar 4 Configuration

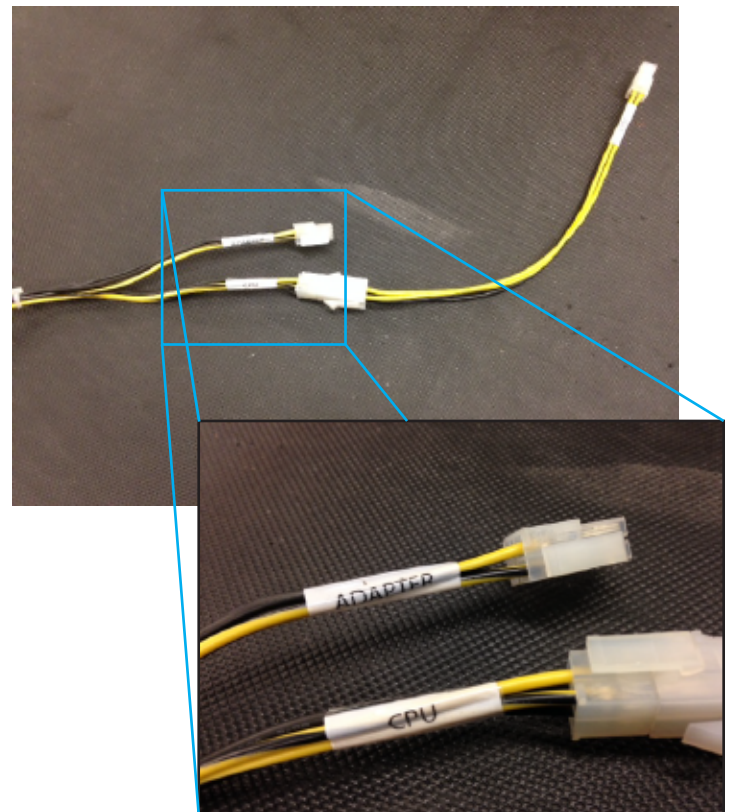


IMPORTANT:



These two adapter cables will already be in the FB4. Connect to the power supply as shown. Notice that the Program Panel adapter will now be plugged into the "CPU" labeled power connector on the power supply.

Road Hog 4 Configuration

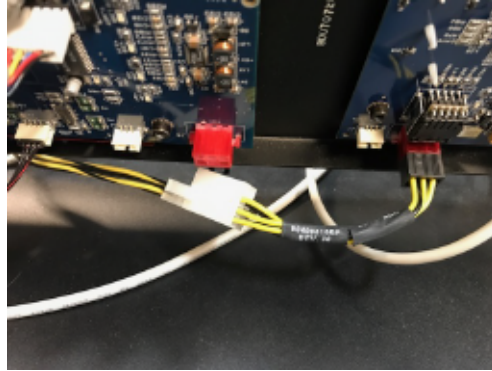


STEP 16 (cont.)

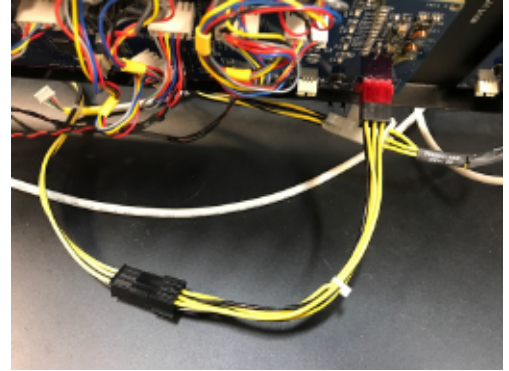
Full Boar 4 Connections



Power Adapter Male SATA

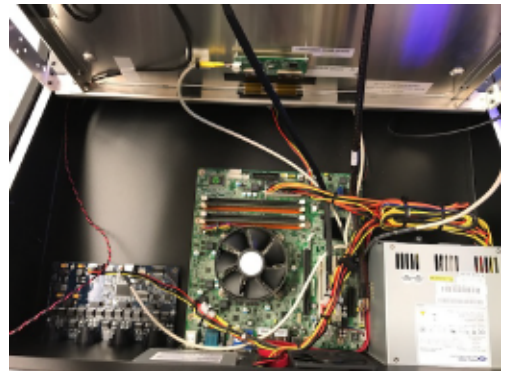
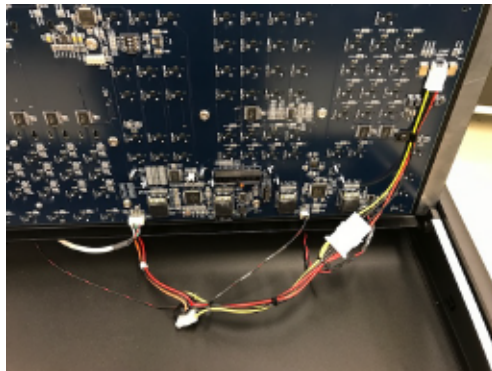


Power Adapter PCIE



CPU Power Extension Cable

Road Hog 4 Connections



For further information or technical assistance, please contact customer service directly, or e-mail - support@highend.com

High End Systems
2105 Gracy Farms Lane
Austin, TX 78758 USA

Office and Customer Service: 512-836-2242
Fax: 512-837-5290
Toll Free: 800-890-8989