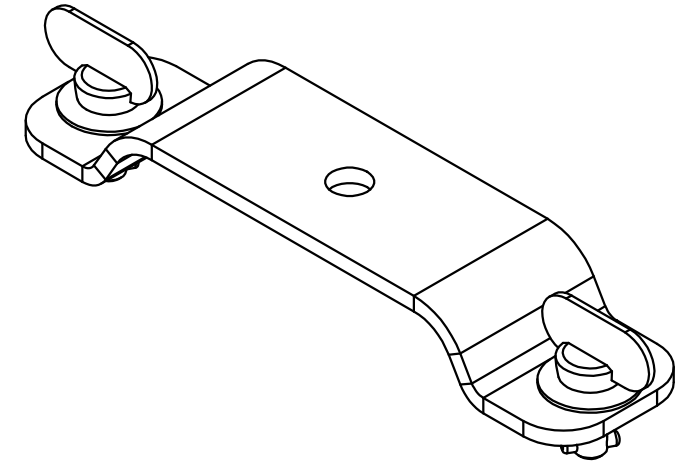
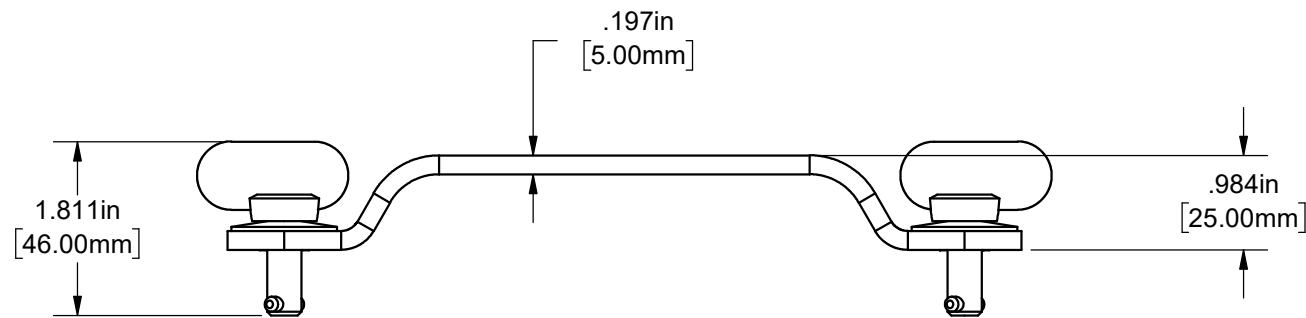
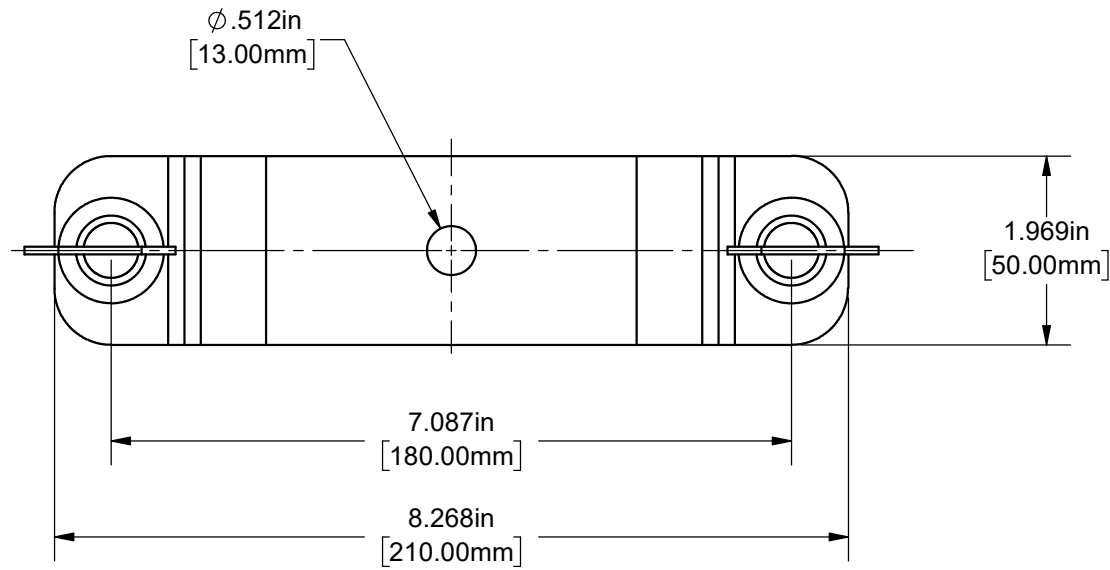


D

C

B

A



NOTES:

1. PART IS SYMMETRIC ABOUT CENTERLINE

Fabrication Notes Unless Otherwise Specified:
 1.) All dimensions are in inches [mm].
 2.) Remove all burrs and sharp corners.
 3.) All threads to be free of paint and debris.
 4.) All welds to be ground or polished.
 5.) Tolerances: X.XX = +/- 0.010in (0.254mm)
 X.XXX = +/- 0.005in (0.127mm)
 Forming: +/- 0.015in (0.381mm) per bend,
 Max cumulative +/- 0.031in (0.7874mm)
 Formed Angles: +/- 1°
 6.) Purchased parts must be RoHS
 directive compliant.



The information contained in this drawing is the sole property of ETC. Any reproduction in part or whole without the written permission of ETC is prohibited.

HIGHEND SYSTEMS High End Systems
 2105 Gracy Farms Lane, Austin TX 78758
 an ETC Company (512) 836-2242 | highend.com | etconnect.com

| | | | | | |
|--------------|---------------|-----------|----|-----------------------------|--------------------------------|
| PART NUMBER: | NA | REVISION: | 00 | FINISH: | BLACK |
| DESCRIPTION: | CLAMP BRACKET | | | | |
| MATERIAL: | NA | | | | |
| WEIGHT (LB): | | SIZE: | | DESIGNED BY: | ABROWN |
| | | | | DATE: | 8-13-19 |
| | | | | SHEET: | 1 OF 1 |
| | | | | B SIZE - DO NOT SCALE PRINT | SCALE: 1:2 |
| | | | | | TITLE BLOCK UPDATED 2018/09/20 |

| REV | ECM | DESCRIPTION | DATE | BY | APP |
|-----|-----|-------------|------|----|-----|
| | | | | | |
| | | | | | |
| | | | | | |

1

2

3

4

5

6