

1. Purpose

To reinstall the configurations for the Gio Touch Screen.

2. Equipment needed

-USB-A to Mini-B cable

3. Procedure –(See section 4 to install driver and settings software on configuration computer.)

3.1 Open up AdvancedNVMSettingsCreator.exe and then on the Frequently Used Settings change the “Controller Type” to “MaxTouch II(m xT1386)

3.2 Now go to the mXT1386 tab that will be at the top bar as seen in Figure 4.

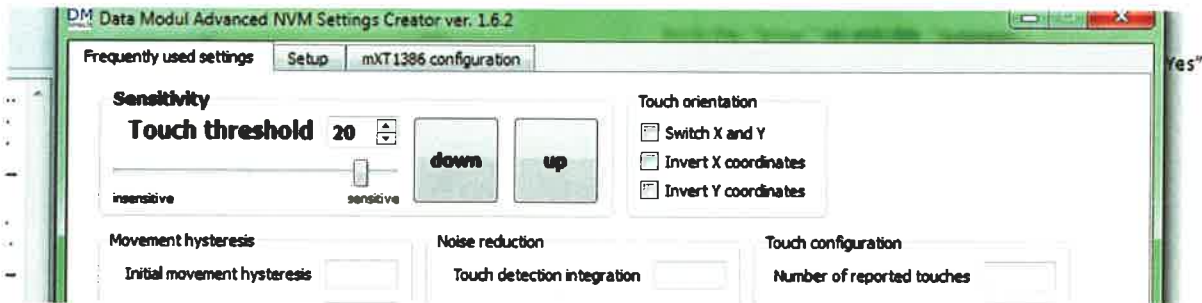


Figure 4. Nvm Tool after the controller type has been changed.

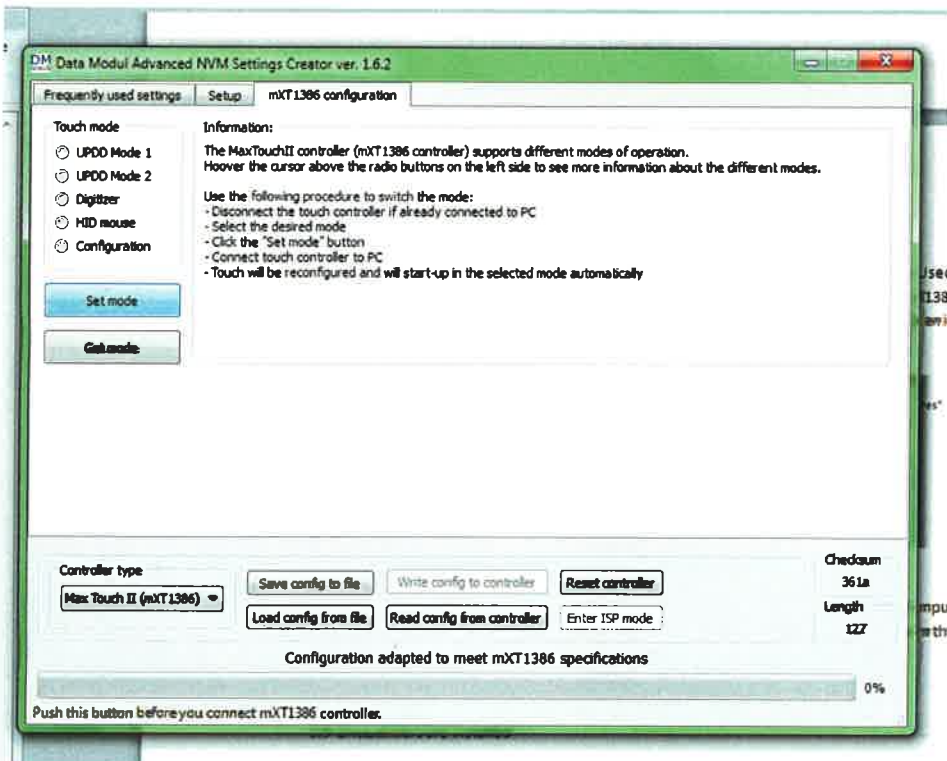


Figure 5. mXT1386 tab of the Nvm Tool.

- 3.3 Click on the UPDD Mode 1 under the Touch Modes as seen in Figure 5. Then click "Set Mode".
- 3.4 Once pressed, the USB must be plugged into the computer within 30 seconds otherwise the program will time out.
- 3.5 Then, once Nvm says, "Mode switched successfully" unplug the USB from the computer.
- 3.6 Now, click on, "Digitizer" under Touch Mode. Click, "Set Mode" and plug the USB into the computer within 30 seconds.
- 3.7 Wait for the mode to successfully switch and unplug the USB.
- 3.8 Now the settings have been restored onto the Gio touch screen.

4. Installing the required drivers and software

4.1

First install “easy TouchUPDD” driver (look to Figure 1)

- Click install after Data Modul UPDD Install screen appears
- Windows security may ask, “Would you like to install?” Click Install.

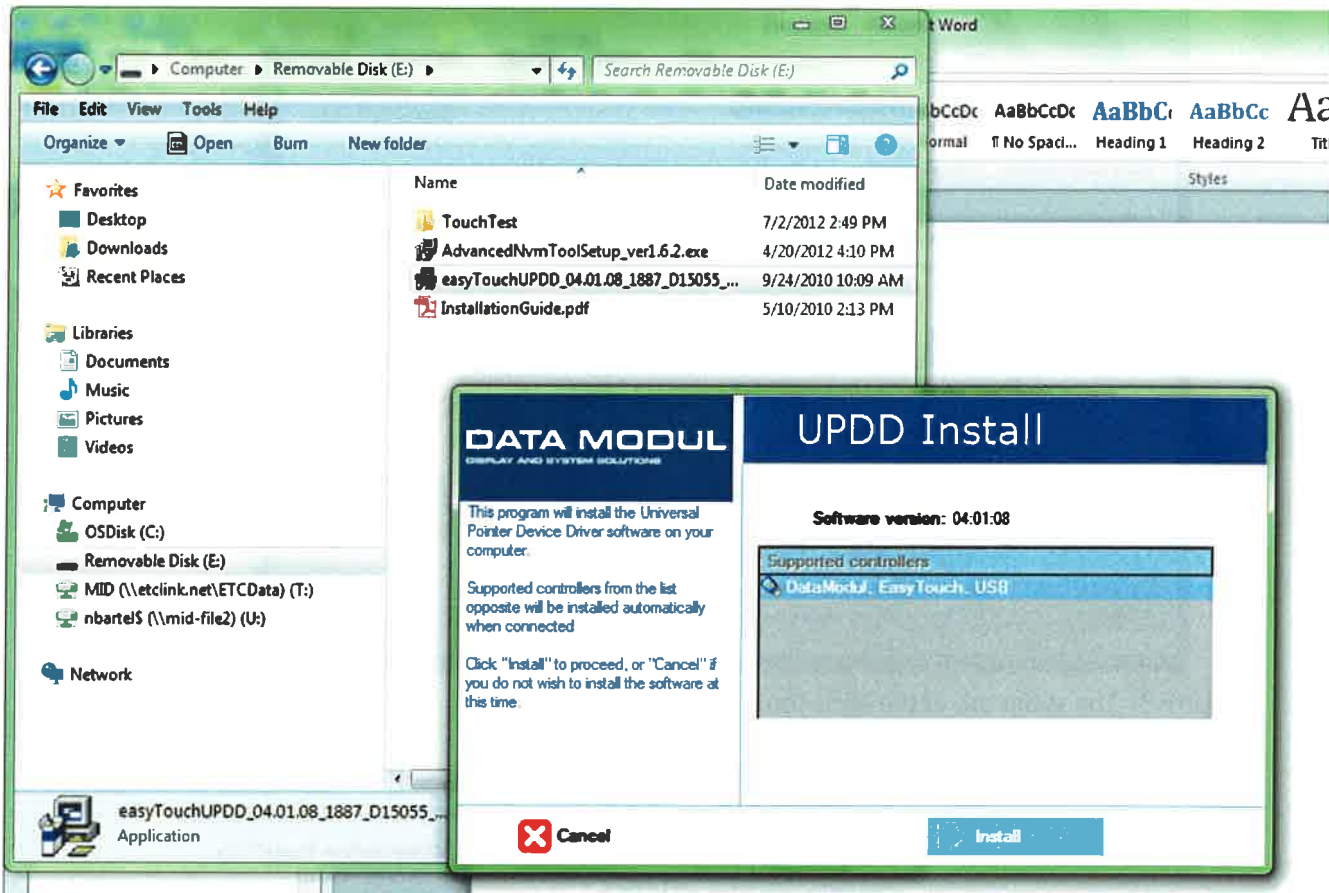


Figure 1. The files and how the UPDD Install screen should appear.

4.2

After the installation finishes installing, click “Close”. Do not restart computer now. Then install the “AdvancedNvmToolSetup_ver.6.2.exe”.

4.3

The program should launch and appear like Figure 2.

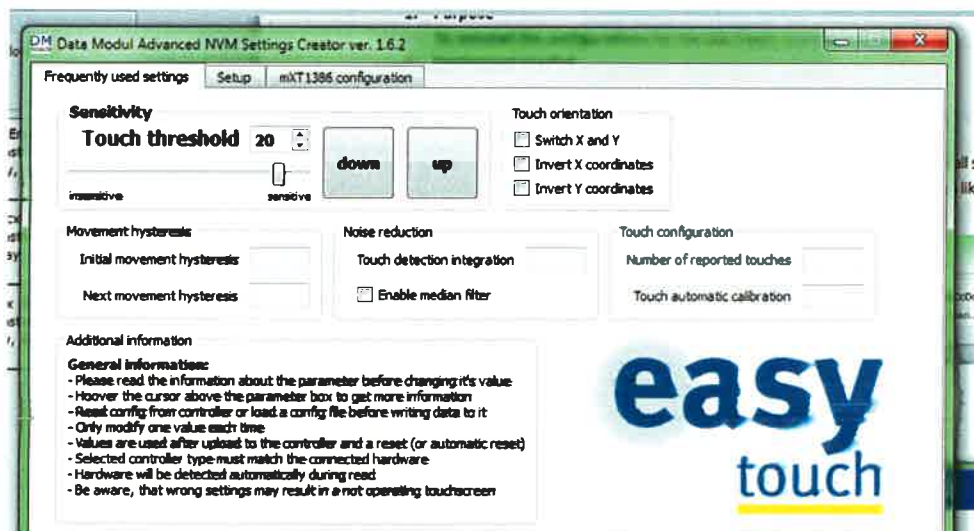


Figure 2. The Nvm Tool program once launched

- 4.4 Go to the "Setup" tab and click "Autosearch driver path"
-once it shoes the correct path that it should be than click "Yes"

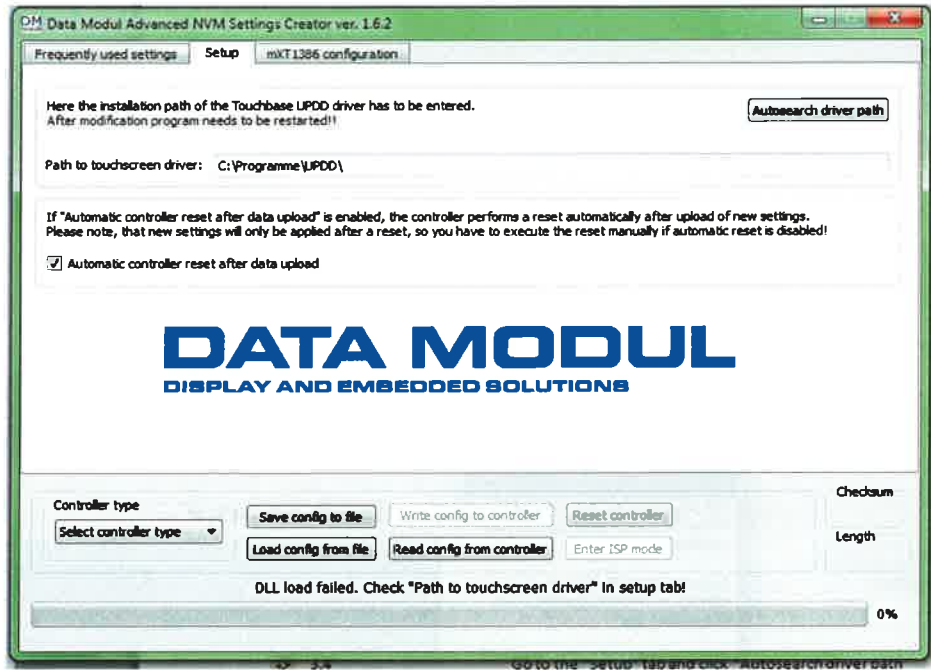


Figure 3. The setup tab of the Nvm Tool

- 4.5 Close the program and NOW restart the computer
- 4.6 Open up AdvancedNVMSettingsCreator.exe and then on the Frequently Used Settings change the "Controller Type" to "MaxTouch II(m xT1386)
- 4.7 Now go to the mxT1386 tab that will be at the top bar as seen in Figure 4.

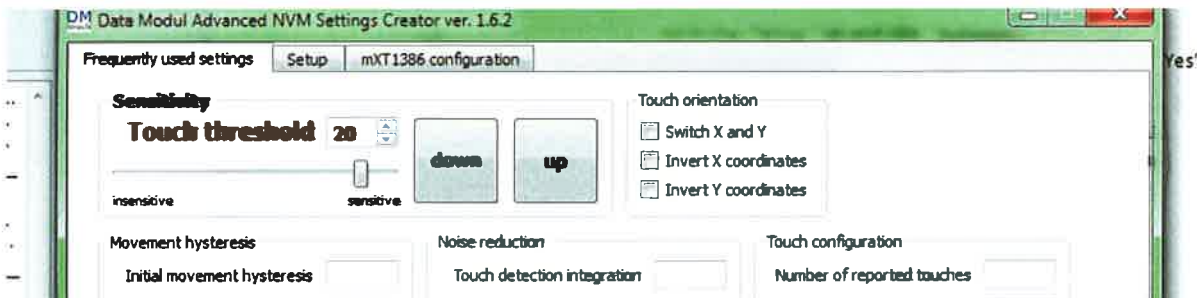


Figure 4. Nvm Tool after the controller type has been changed.

4.8

Plug the USB connected to the Gio touch screen into the computer and wait for the drivers to install. Then unplug the USB from the computer.

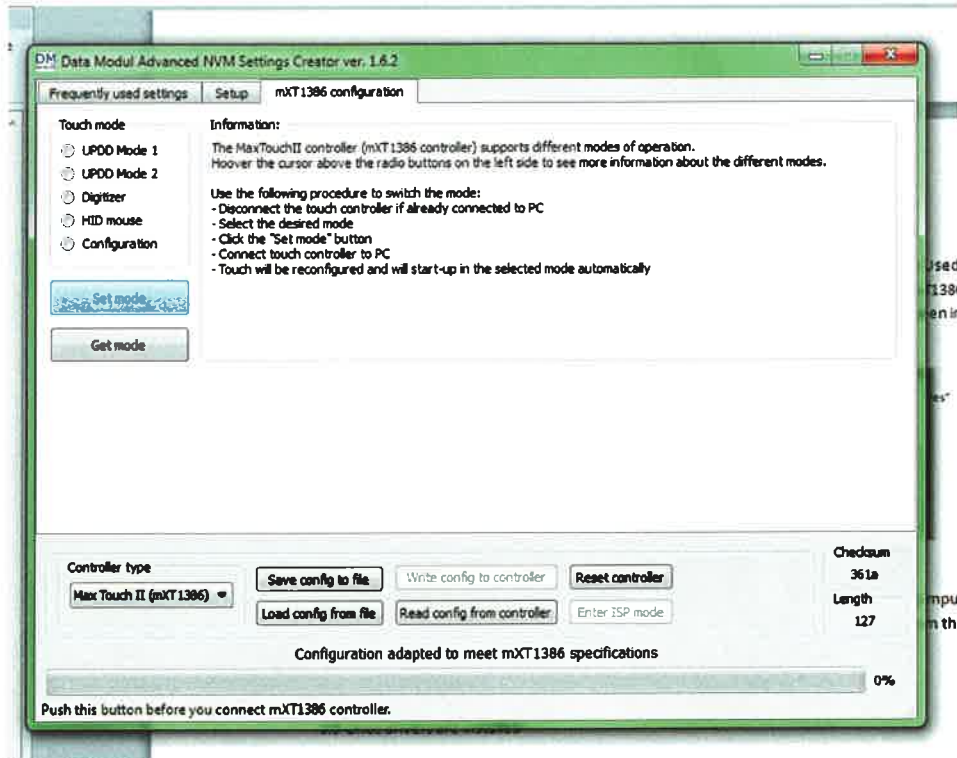


Figure 5. mXT1386 tab of the Nvm Tool.

4.9

Once drivers are installed click on the UPDD Mode 1 under the Touch Modes as seen in Figure 5. Then click "Set Mode".

4.10

Once pressed, the USB must be plugged into the computer within 30 seconds otherwise the program will time out.

4.11

Then, once Nvm says, "Mode switched successfully" unplug the USB from the computer.

4.12

Now, click on, "Digitizer" under Touch Mode. Click, "Set Mode" and plug the USB into the computer within 30 seconds.

4.13

Wait for the mode to successfully switch and unplug the USB.

5.

